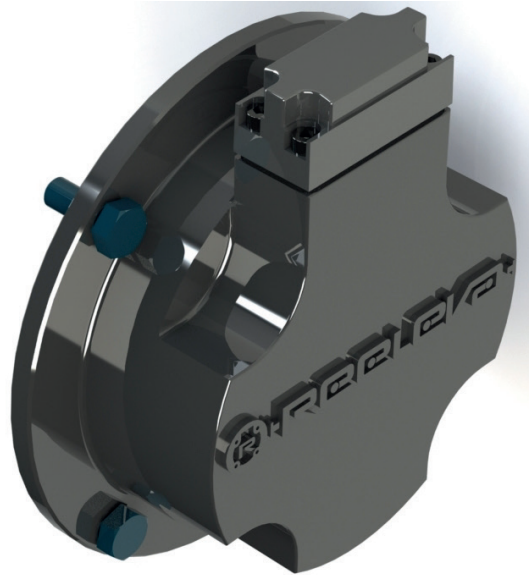


Smart Systems Integrated® products



Reeleva



In-depth support for innovation and exploitation in Smart Systems Integration

What's different in your product?

Turn your smartness inside out

Product Name

Reeleva

Product description

REELEVA is a smart monitoring system, destined to safety of freight wagons, composed by 8 sensorized box bushing and a SU Coordinator, developed by LCA Ballauri and Movimatica with an exclusive patent by Politecnico of Torino. REELEVA allows the 4.0 management of the fleet with following concepts: dedicated algorithms to continuous monitor wagon life parameters; energy self generation; on condition wagons maintenance; wagon tracking; pit stop installation & wireless cloud management.

Product Owner

LCA Ballauri S.r.l. - Movimatica S.r.l.
www.lcaballauri.com - www.movimatica.com

Contact

Str. del Portone 129, 10095 Grugliasco (TO), Italy
commerciale@lcaballauri.com
www.reeleva.com - info@reeleva.com

Smart Systems Integrated®

is a Collective European Union Trademark



Owner of Trademark

EPoSS

Organising Body of Trademark

Mesap

Website

www.ssi-trademark.org



The Coordination and Support Action inSSight has received funding from the European Community's programme Horizon 2020 under GA number: 731665

www.inssight.eu